

Technical data sheet

All right reserved Landa illuminotecnica S.p.A.
will reserve to change the specific note without
any written notice.

LANDA[®]
illuminotecnica

Lako

Article 409.060L7HX1 mono-emission	
Product type Bollard	
Body material: Die-casting aluminium EN47100 and extruded aluminium AW 6060, prior the painting process, washed with stones. Painting made by polyester powder with high resistant against oxidation.	
Opal polycarbonate UV protection and PVC gaskets	
Screws in A2 stainless steel	
Colours available: Graphite and Oxide	
No transformer required - AC 220/240V	Dimmable: NO

IK08
IP65
850°C
Powered by
Seoul Semiconductor 2525
3000°K 7W 600LM RA80

Transformer not required
AC 220/240V

www.landa.it

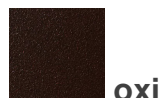


Colours available:

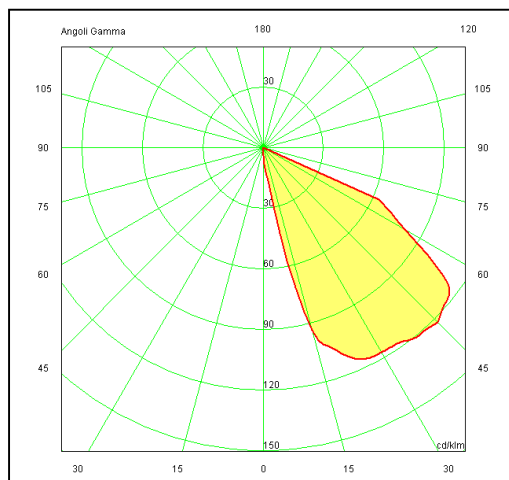
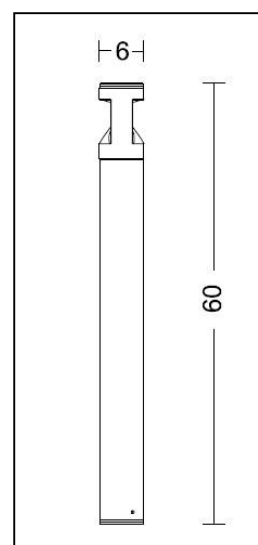
Graphite



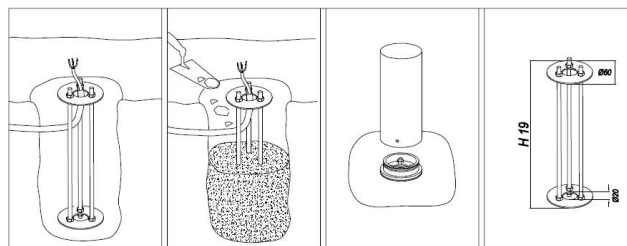
Oxide



Light effect:



Accessories on request:



Code 00A409 Anchor Bolt