

serie/series  
**wall  
 mira 65**

**LED**  
 powered by  
 Seoul® Semiconductor Z5M

example code:  
 | art. | LED | ○ | anodized |  
 4155 | L5 | N | brz

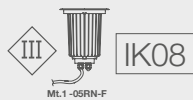
art.  
**4155**  
**4156**



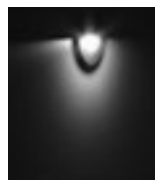
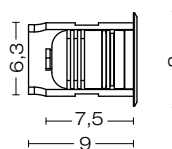
design Ufficio Tecnico Landa

corpo alluminio estruso  
 anodizzato  
 body in extruded anodized  
 aluminium  
 corps en aluminium  
 extrudé anodisé  
 cuerpo en aluminio  
 extrusionado y anodizado  
 Körper aus eloxiertem  
 fließgepresst Aluminium

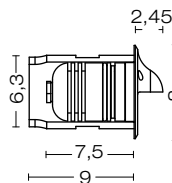
diffusore vetro opale  
 diffuser glass opal  
 diffuser verre opale  
 difusor vidrio ópalo  
 Diffuser Glas opal



code ....L5



code ....L5



FOR TECHNICAL DETAILS VISIT  
[www.landa.it](http://www.landa.it)

IP66

art.	art.		W	V	Type		Ra
4155L5N	4156L5N	○	5	24	4000K	480LM	80
4155L5H	4156L5H	●			3000K	480LM	80



ELECTRIFICATION

**LED**

dettagli / details / details  
 detalles / details:  
 p.A54 - A55

Energy efficiency classes

Trasformer available:

cod. 0409BT014 to connect up to 2 pieces – GE LIGHTING IP67 24V c.c. 12W  
 cod. 0409BT015 to connect up to 4 pieces – GE LIGHTING IP67 24V c.c. 25W

Trasformer on request:

cod. 0409BT016 to connect up to 16 pieces – GE LIGHTING IP67 24V c.c. 100W

A++ ÷ A

Accessories on request:



code 0404M009  
 Single connection IP68

wall  
mira 65 (24V)

Projectors

NEW

Recessed

Contemporary

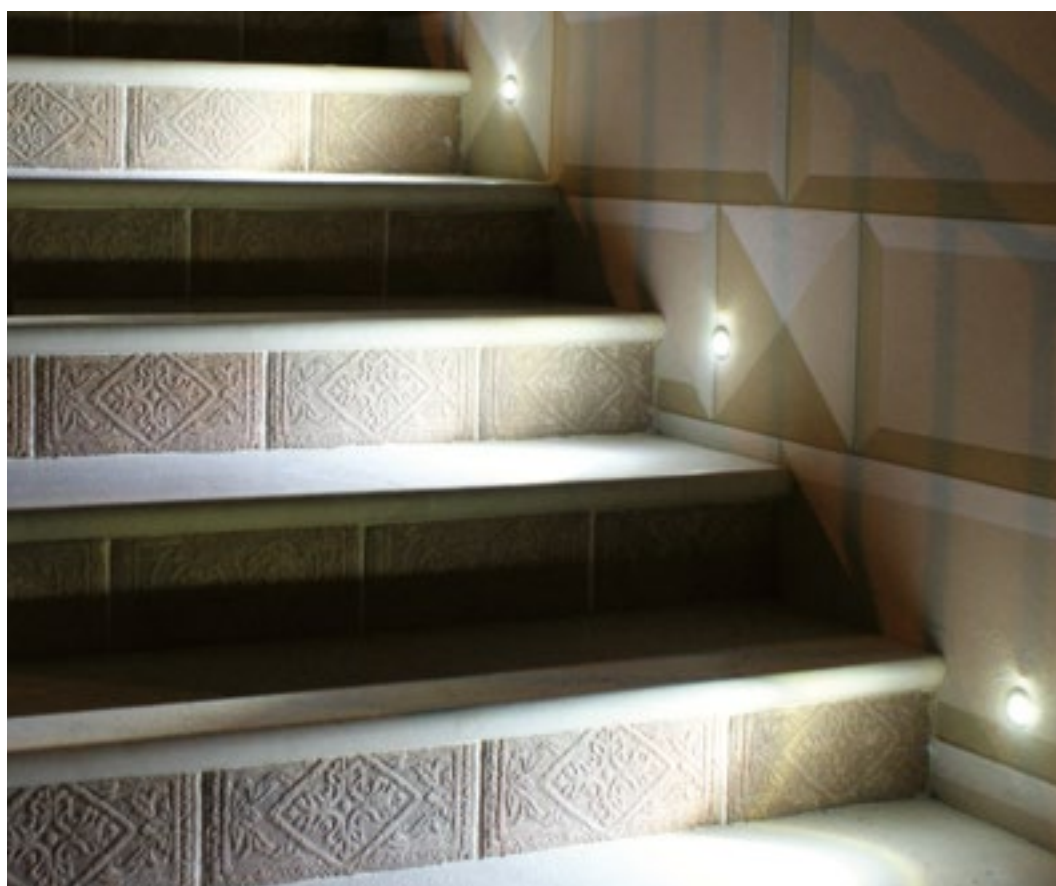
Traditional



ENERGY  
SAVING

RECESSED

17



...brz



...inx

