

8 800 301-72-50
http://lampshopping.ru

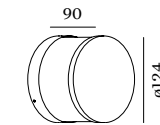


GETTON

1.0

LED 8W | 220-240VAC | 50-60Hz
PCB3-step | incl. PS | phase-cut dim
aluminium powder coated

CE 0.83kg ⊕ 960° IP65 ≈0,3 Ⓢ



3000K | >85CRI | 665lm | opal glass



717474W4



717474D4

OPTIONAL

big cover



911141W1



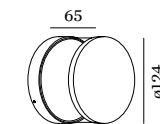
911141D1



2.0

LED 8W | 220-240VAC | 50-60Hz
PCB3-step | incl. PS | phase-cut dim
aluminium powder coated

CE 0.83kg ⊕ 960° IP65 ≈0,3 Ⓢ



3000K | >85CRI | 720lm | clear glass



717374W4



717374D4

OPTIONAL

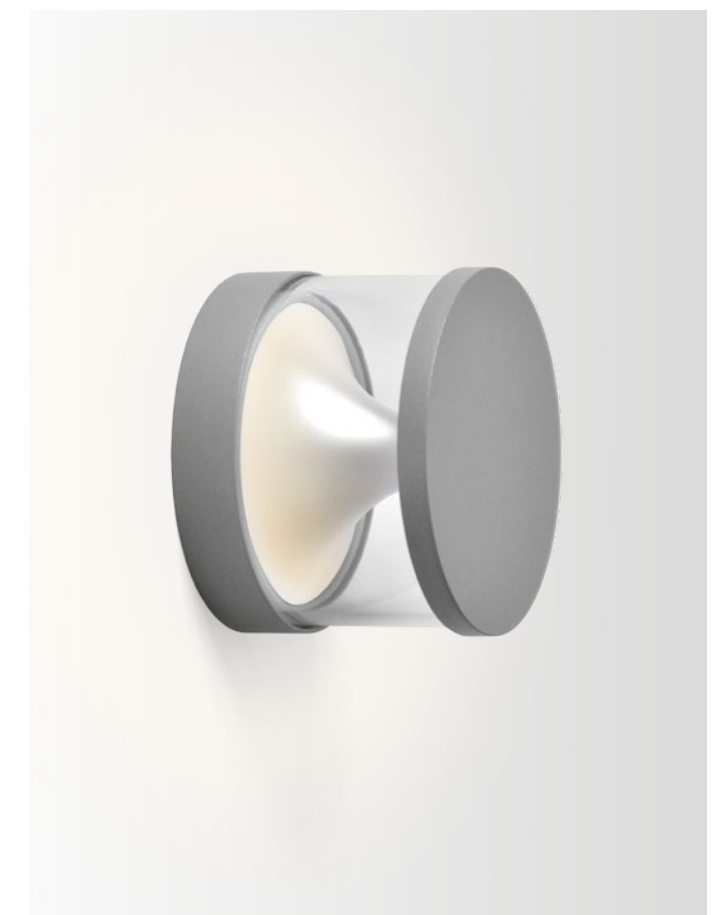
big cover



911141W1



911141D1



EXTERIOR | WALL SURFACE