

8 800 301-72-50
<http://lampshopping.ru>

X-BEAM

1.0

LED 12W | 220-240VAC | 50-60Hz
 COB 2-step | incl. PS | phase-cut dim
 aluminium powder coated

CE 1.28kg □ 960° IP65 0.35' Ⓢ 120°

0-110°

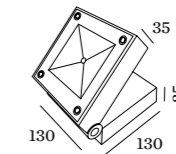
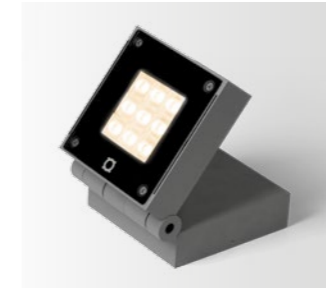


2.0

LED 12W | 220-240VAC | 50-60Hz
 PCB 2-step | incl. PS | phase-cut dim
 aluminium powder coated

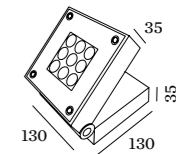
CE 1.28kg □ 960° IP65 0.35' Ⓢ 120°

0-110°



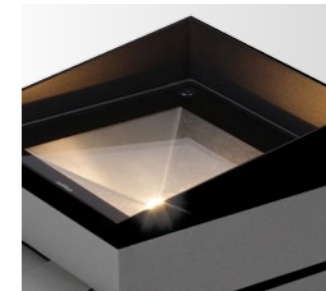
3000K | >80CRI | 770lm

700264D4



3000K | >80CRI | 680lm

700254D4



ACCESSOIRES

snoot **90019005**

groundspike **90013106**

ACCESSOIRES

snoot **90019005**

groundspike **90013106**



EXTERIOR | FLOOR PROJECTOR

X-BEAM

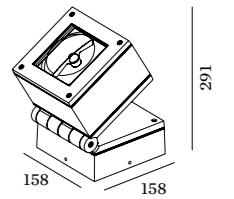
1.0

QR111 max. 75W | G53
220-240VAC | 56-60Hz | TE
aluminium powder coated

CE 1.28kg ⊕ 960° IP65 ⚡ 0,3 Ⓢ

0-110°

355°



700338T0

ACCESSOIRES
groundspike 90013108

